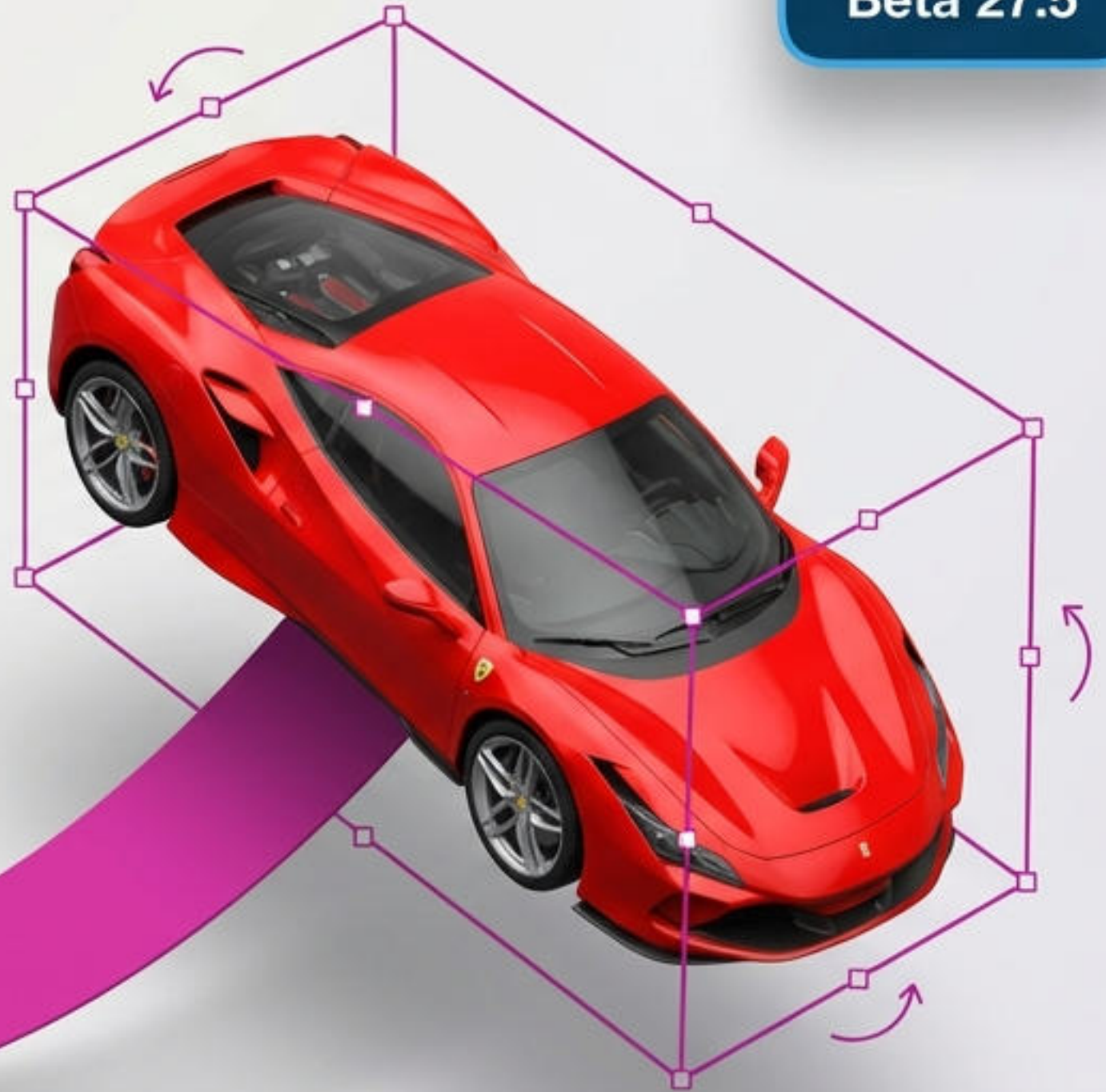
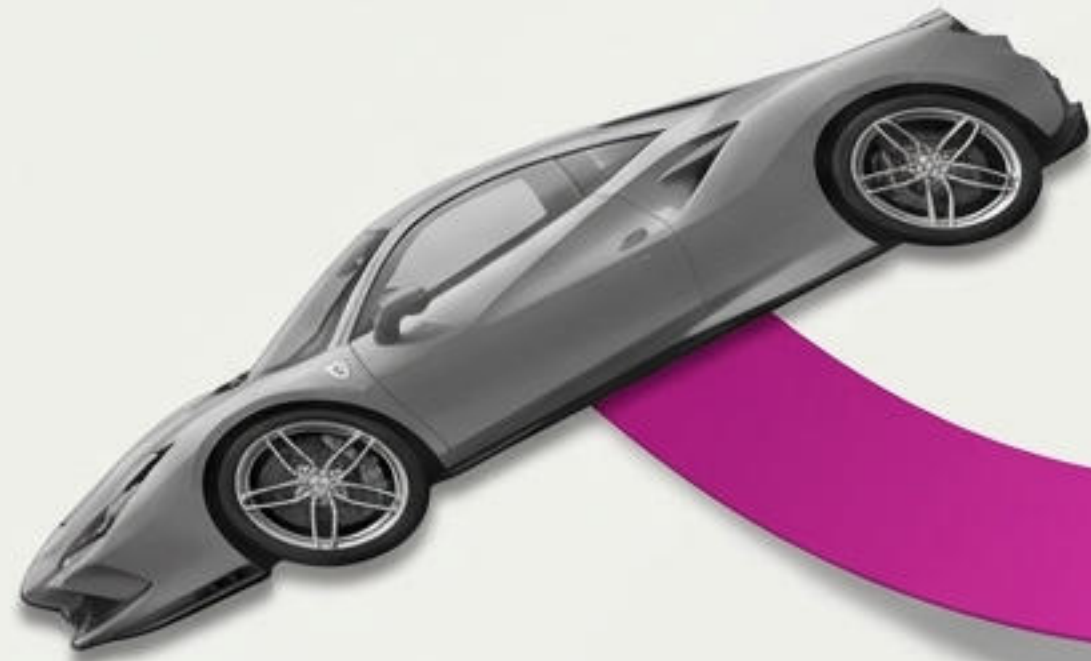


Photoshop - New Rotate Object

The Beginner's Step-by-Step Guide to 3D Compositing with Generative AI

Requires Photoshop Beta 27.5



Compositing Just Got a Massive Upgrade



The Old Way



The New Way



Manual perspective matching

Instant, 1-click automatic masking

Painstaking edge masking

True 3D spatial rotation (Spin, Tilt, Perspective)

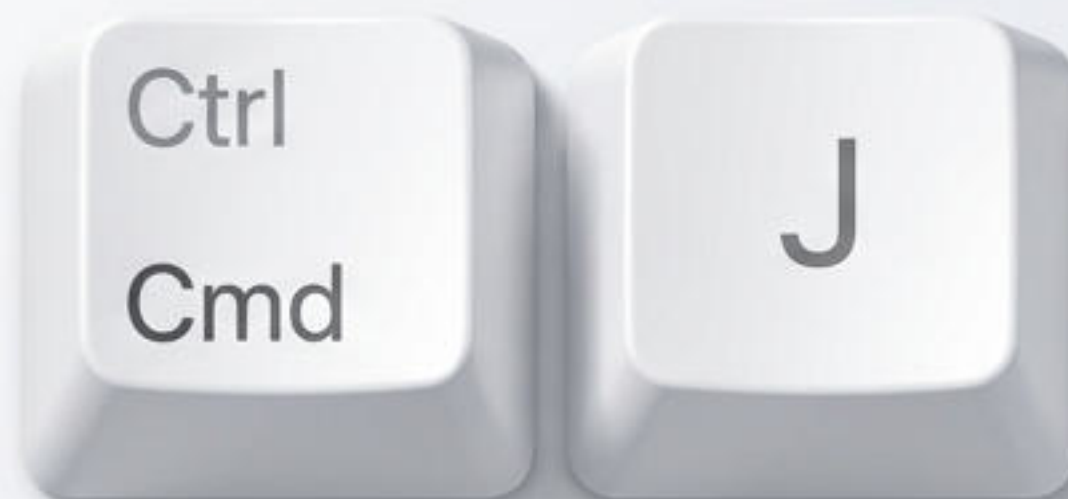
Fixed permanently to original camera angle

AI-generated high-resolution perspectives

Takes hours of trial and error

Done in seconds

**STOP! Before you click anything...
Always Duplicate Your Layer.**



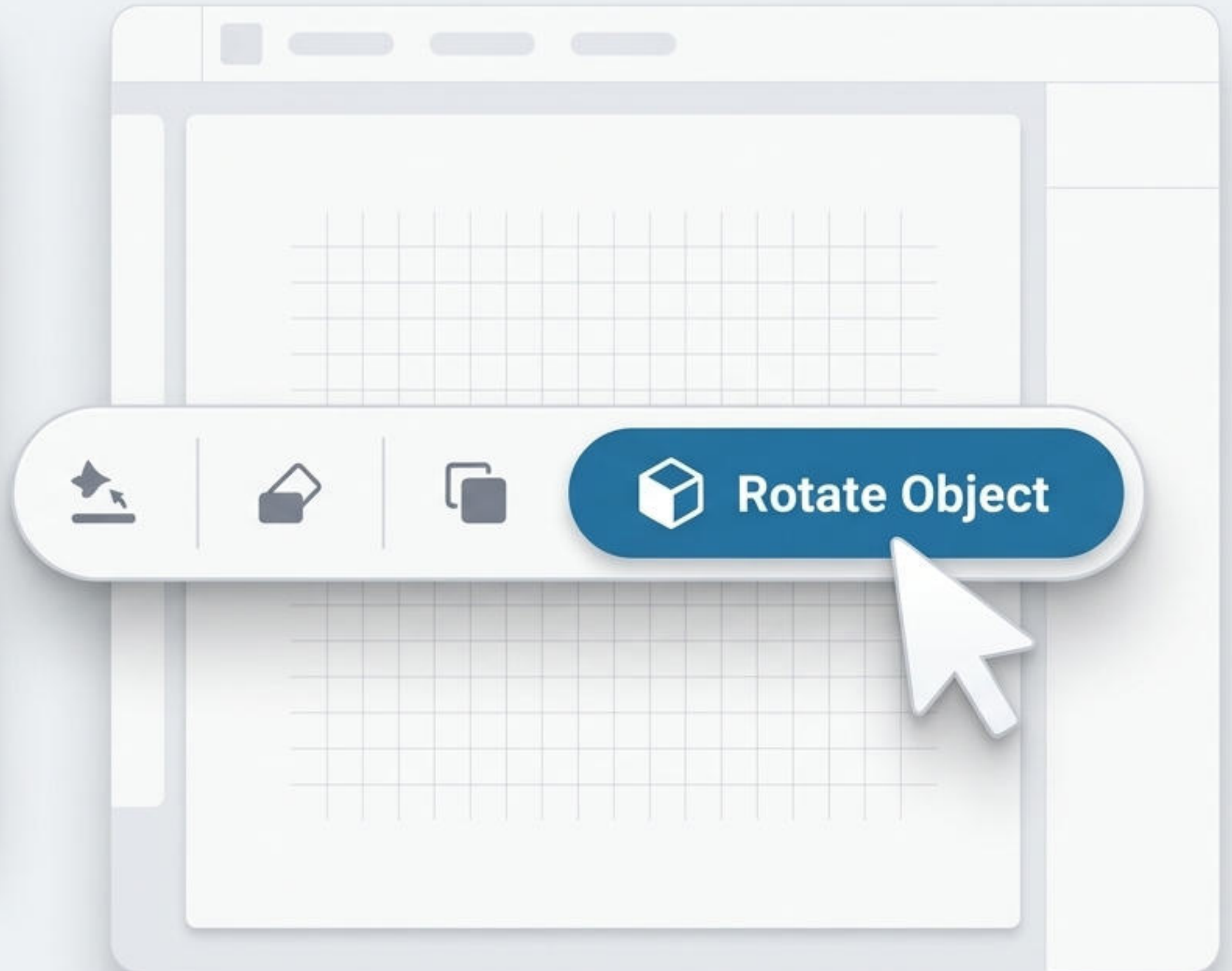
The new Rotate Object tool permanently deletes your original pixel layer, converting it into a rotatable 3D object. Protect your original base image by hitting Ctrl+J (Windows) or Cmd+J (Mac) before applying any transformations.

Step 1: Activate Transform Mode

Select your duplicated layer and press Ctrl+T (Windows) or Cmd+T (Mac).

Step 2: Locate your contextual taskbar and click the shiny new Rotate Object button.

Pro-Note: Photoshop will automatically mask your subject. If the auto-mask isn't perfect, manually mask it before hitting **Rotate Object**.



Step 2: Master the 3D Controls



Perspective Shift

Make the object pop straight at the viewer.

Adjust Tilt

Change the camera angle (look top-down or bottom-up).

Free Rotation

Spin the object completely around in 3D space.

Properties

Spin



Tilt



Rotation

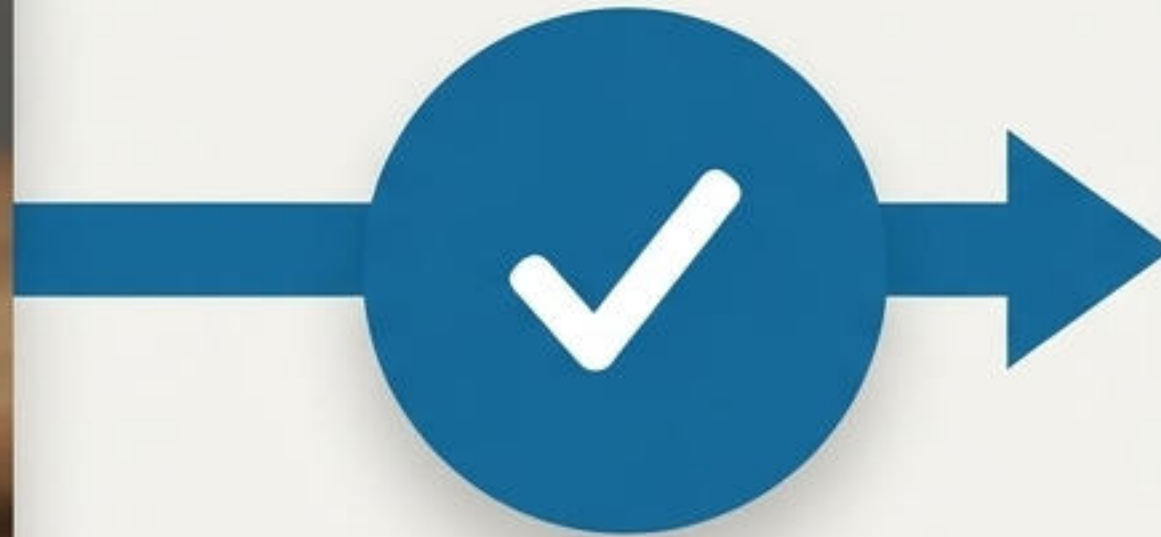


Warm Amber: Prefer exact numbers?
Use the sliders in the Properties Panel for precise Spin, Tilt, and Rotation values.

Step 3: Let Generative AI Do the Heavy Lifting



While dragging the controls, you will only see a low-resolution preview. Don't panic!



Click Done or press Enter. Photoshop leverages Firefly AI to recreate the object in the new pose at full resolution.



Costs 20 Generative Credits per render.

Rotating Portraits? Build a Clean Plate First



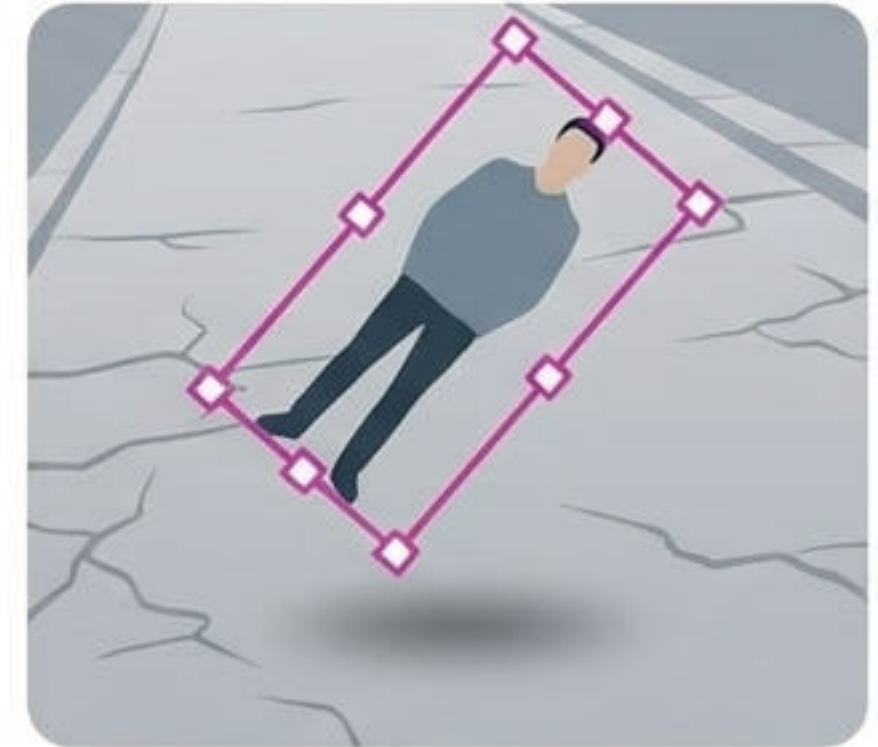
Select

Loosely trace the person using the Selection Brush Tool.



Fill

Use Content-Aware Fill to remove the person, leaving a perfectly clean background plate.

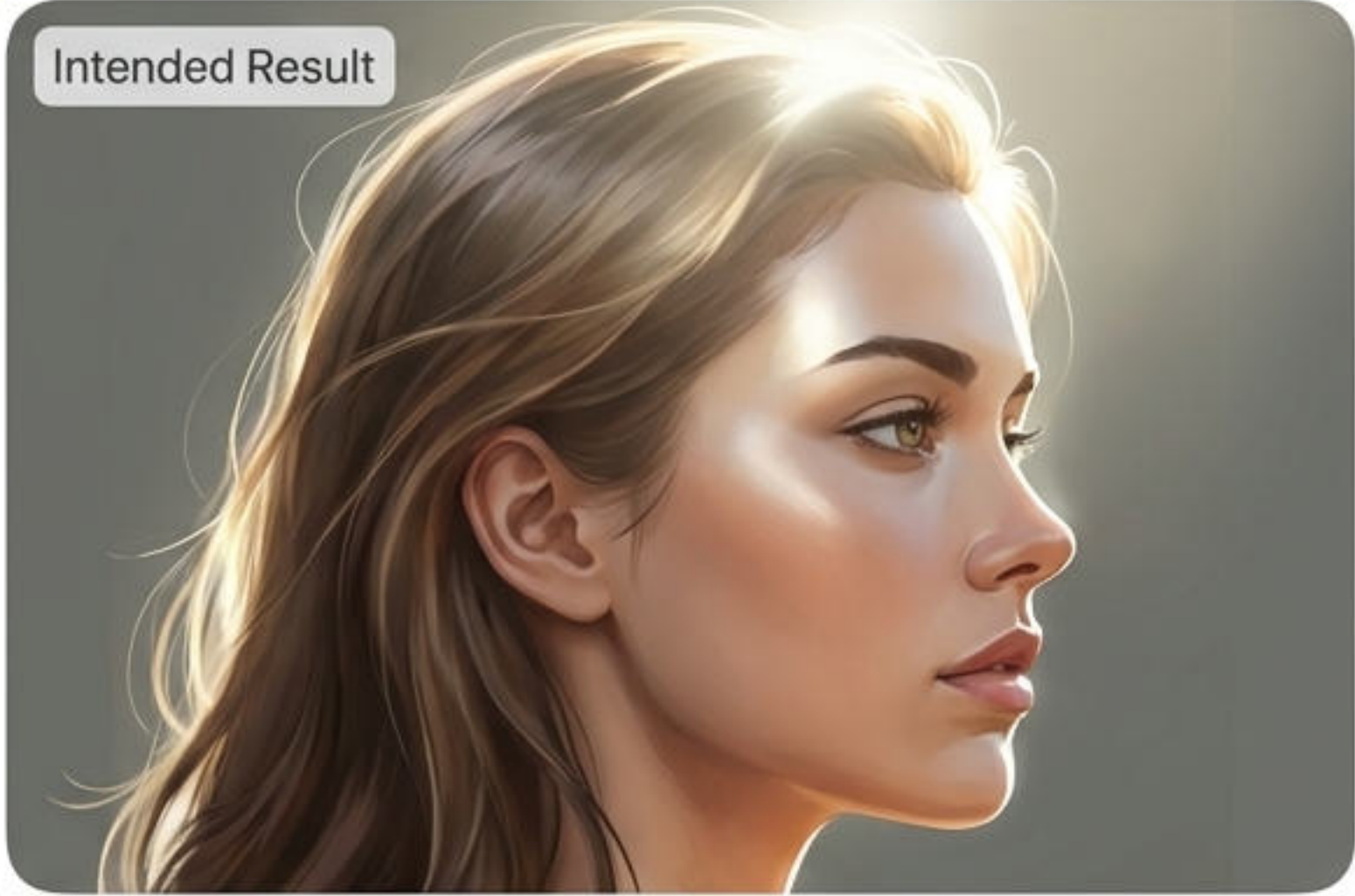


Rotate

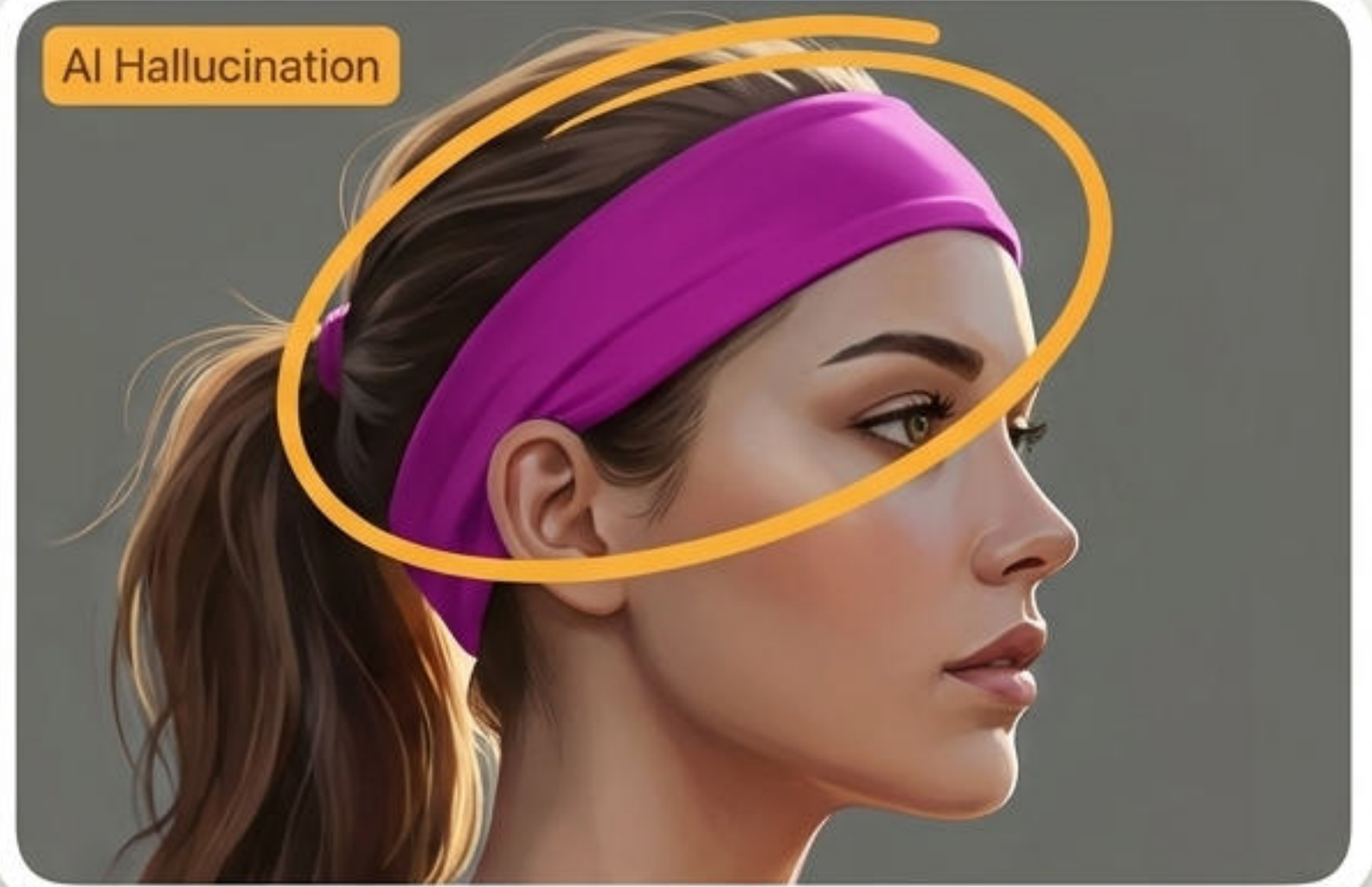
Duplicate your original subject, move it to the top of the layer stack, and apply Rotate Object over the clean background.

Expect the Unexpected: AI Hallucinations

Intended Result



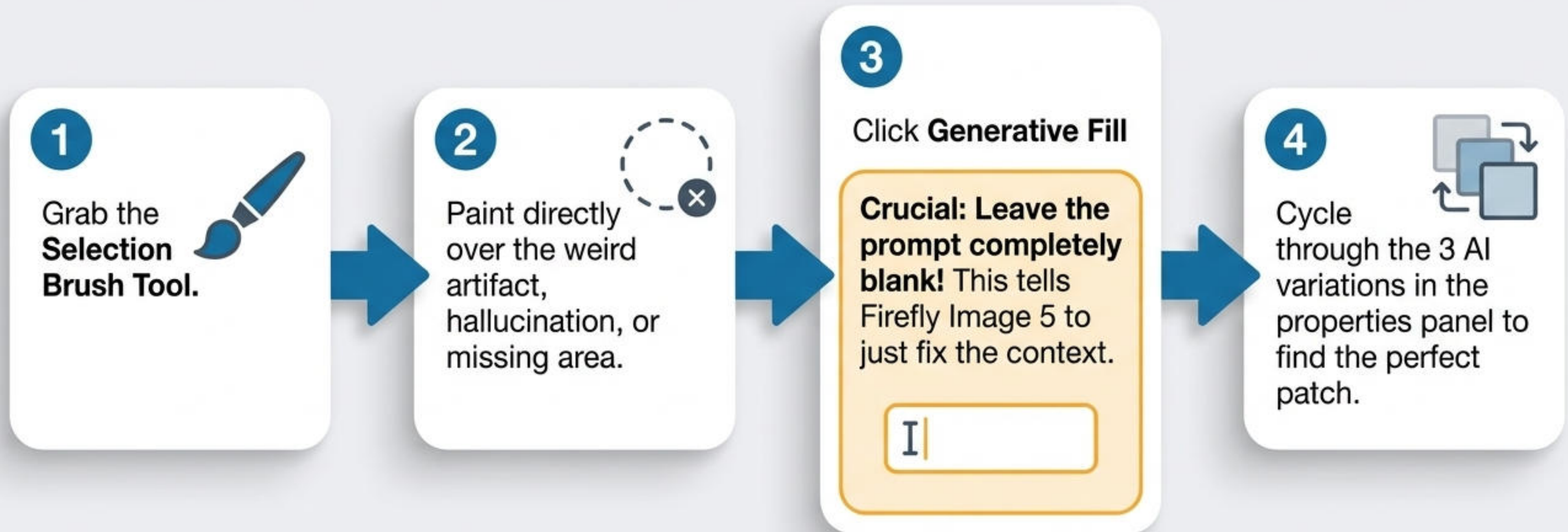
AI Hallucination



What is it? Sometimes the AI gets confused by reflections or shadows and invents details that weren't originally there (like turning a bright highlight into a headband).

The Fix? Don't delete your layer and start over. You can patch it seamlessly.

Step 4: Patch Mistakes with Generative Fill



Step 5: Harmonize to the Scene



The Problem: Your newly rotated object will likely have the wrong lighting and color temperature for its new background.

The Fix: Click the Harmonize button. Photoshop will automatically analyze the background and adjust the object's shadows, lighting, and colors to match the scene perfectly.

Step 6: Add Realism with the Human Touch

Generative AI is amazing, but traditional skills bring the composite to life.



Motion Blur

Apply Spin Blur to tires to simulate realistic movement.



Reflections

Use Generative Fill over glass areas to manually force reflections of the new environment.



Contact Shadows

Use the Brush Tool to paint grounding shadows underneath the object.

The Secret to Seamless Composites



Rotate Object

For perfect spatial perspective

Harmonize

For perfect lighting and shadows

Traditional Tools

For realistic motion blurs and details

Professional Magic

Your Quick-Reference Workflow Checklist

- ✓ Duplicate base layer (Ctrl+J / Cmd+J).
- ✓ Press Ctrl+T and click Rotate Object in the taskbar.
- ✓ Adjust Tilt, Spin, and Perspective using handles or sliders.
- ✓ Hit Enter to generate High-Res render (Costs 20 credits).
- ✓ Fix AI hallucinations using prompt-less Generative Fill.
- ✓ Apply Harmonize and traditional blurs to ground the image.